



## CRYSTAL REPORTS

For SAP Business One

### Crystal Reports for SAP Business One

Version 8.8 family, 9.0 family, and beyond

Carl Britton Lewis – Chief SAP Business One Ambassador



## Section 8

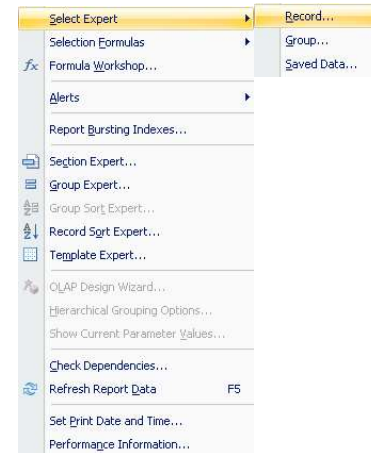


### CRYSTAL REPORTS For SAP Business One

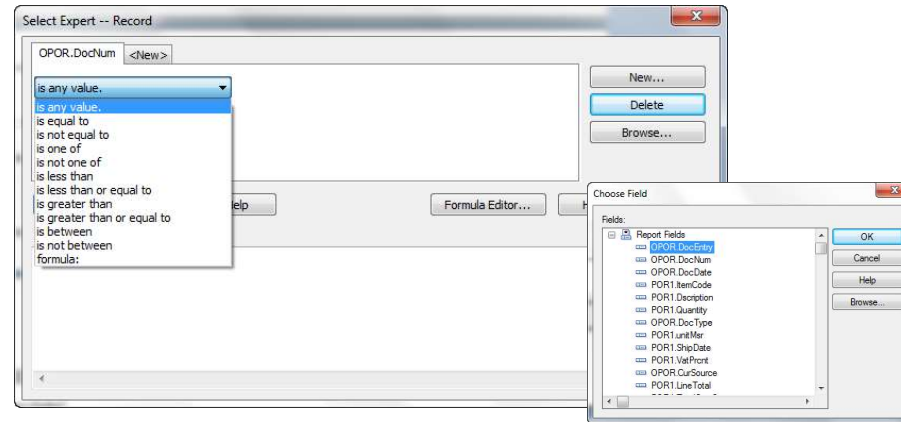
## Filtering Report Data



- Rarely will you want a listing of every record in your database on your report
- Most often you are interested in only a select set of records, as in sales for a particular BP or inventory for a group of products.
- The Select Expert allows you to filter your report by:
  - Record
  - Group
  - Saved Data
- Your record selection criterion does not have to be based on a field in your report. You can choose any field from the database as a basis for record selection.



- The Select Expert opens automatically for the field you select. If you have not selected a field by clicking it to make it active before using one of these methods, a dialog box opens, displaying the fields.
- Using the drop-down list, you can build selection criteria that meet your needs.
- Depending on the field you select, the available options in the second drop-down list are:

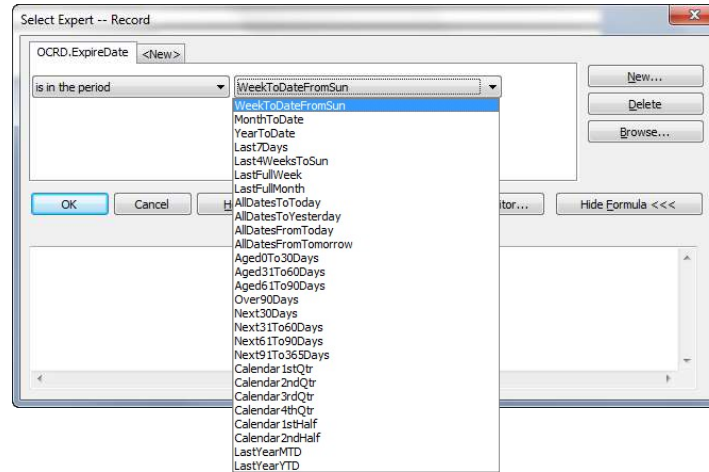


### ■ You may have multiple selection criteria

- Ex: Only Business Partners that are “Customers” or “Leads” (OCRD.CardType) and who are not assigned to salesperson (OSPL.SlpName) “Bill Levine” or “Sophie Klogg”

The screenshot shows a dialog box titled "Select Expert -- Record". At the top, there are two input fields: "OSPL.SlpName" and "OCRD.CardType", with a "<New>" button to the right. Below these is a dropdown menu showing "is not one of". To the right of the dropdown are buttons for "New...", "Delete", and "Browse...". Below the dropdown are "Add" and "Remove" buttons, and a text box containing "Sophie Klogg Bill Levine". At the bottom of the dialog are buttons for "OK", "Cancel", "Help", "Formula Editor...", and "Hide Formula <<<". A text area at the bottom contains the following formula: `{OCRD.CardType} in ['C L'] and not {{OSPL.SlpName} in ['Sophie Klogg Bill Levine']}`

- The following operators are available when applying selection on a date field



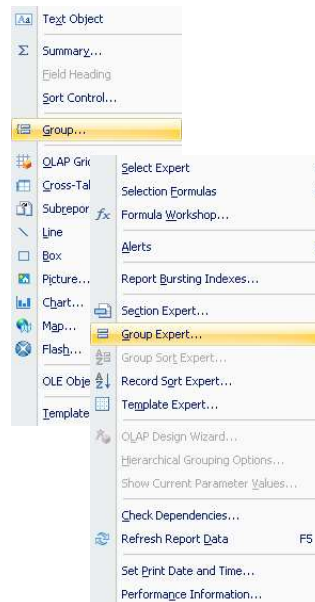
## Section 9



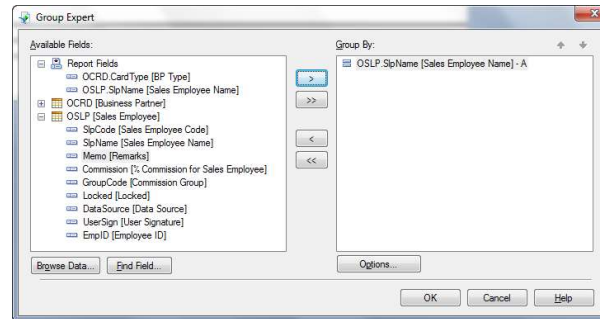
### CRYSTAL REPORTS For SAP Business One

## Grouping & Totaling Data





- Use the Group Expert or the Insert Group icon to define & maintain groups in your report
- Groups can be based on report fields or any field from the database tables you have in your report
- Group Name is inserted automatically on the Group Header area.
- Grouping overrides the record sort.

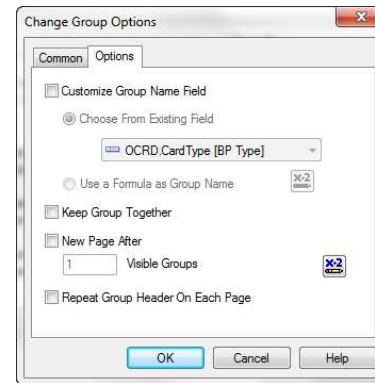
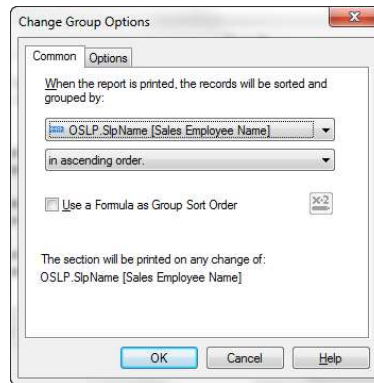


- To add groups to the report, open the Group Expert or the Insert Group icon.
- Select the fields you would like to group the report by. You can use fields from the report, or any other field from the selected tables.
- Group Name is inserted automatically on the Group Header area. (defined on the File>Options>Layout)
- Grouping override record sort. See the group sorting option



■ The following options are available for setting up groups:

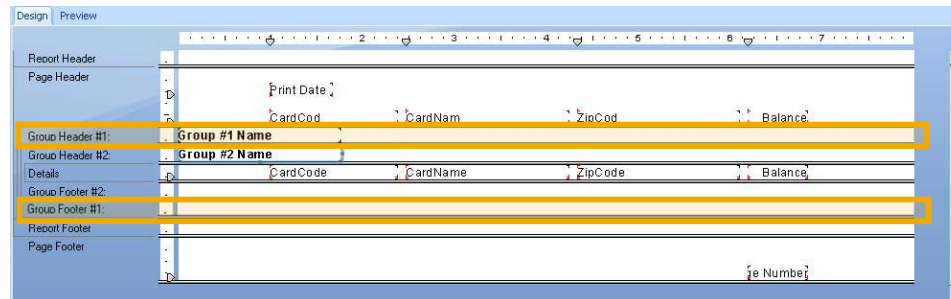
- Customize Group Name fields
- Keep Group Together
- New Page After # of Visible Groups
- Repeat Group Header on Each Page



■ The following options are available for setting up groups:

- ◆ Customize Group Name fields – can choose one of the fields in the report, or use a formula
- ◆ Keep Group Together – prevent groups from splitting across pages
- ◆ New Page After # of Visible Groups – start a new page after a defined number of groups
- ◆ Repeat Group Header on Each Page – in case the group overflow more then one page, the Group Header repeats in each page

- You are not limited to one level of grouping within Crystal. You can have groups within groups.
- To create nested groups, follow the same steps that you did when you created the first group on your report.
- You can create groups in any particular order. Groups can be reordered at any time, unlike the sort order of records.



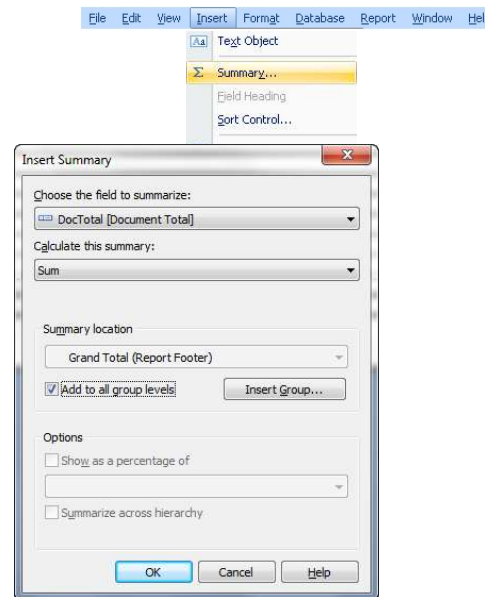
For Company database that does not use calendar month periods

- Add the OFPR (Posting Period) table to your report
- Group by the Period Code (OFPRCode)

The screenshot displays three overlapping windows from the SAP report configuration tool:

- OINV Table:** Lists fields such as StampNum [Stamp No.], isCrim [Correction Invoice], FinncPrd [Posting Period], UserSign [User Signature], selfInv [Autom. Invoice], VatPaid [Tax Paid to Date], VatPaidFC [Tax Paid (FC)], and PaidSys [Tax Paid (SC)].
- OFPR Table:** Lists fields such as AbsEntry [System Nur], Code [Period Code], Name [Period Name], and F\_RefDate [Prctinn Da].
- Group Expert:** Shows 'Available Fields' on the left and 'Group By:' on the right. The 'Group By:' list includes 'OFPR.Code [Period Code] - A', 'OINV.DocDate [Posting Date] - A', and 'OINV.CardName [Customer/Vendor Name]'. The 'Available Fields' list includes DocDueDate [Due Date], CardCode [Customer/Vendor Code], CardName [Customer/Vendor Name], Address [Adress], NumACard [BP Reference No.], VatPercent [Tax Rate], VatSum [Total Tax], VatSumFC [Tax Amount (FC)], DiscPcent [Discount % for Document], DiscSum [Total Discount], DiscSumFC [Total Discount (FC)], DocCur [Document Currency], DocRate [Document Rate], and DocTotal [Document Total].
- Change Group Options:** Shows the 'Options' tab with 'When the report is printed, the records will be sorted and grouped by:' set to 'OFPR.Code [Period Code]' and 'in ascending order.' There is a checkbox for 'Use a Formula as Group Sort Order' and a section for 'The section will be printed on any change of: OFPR.Code [Period Code]'.

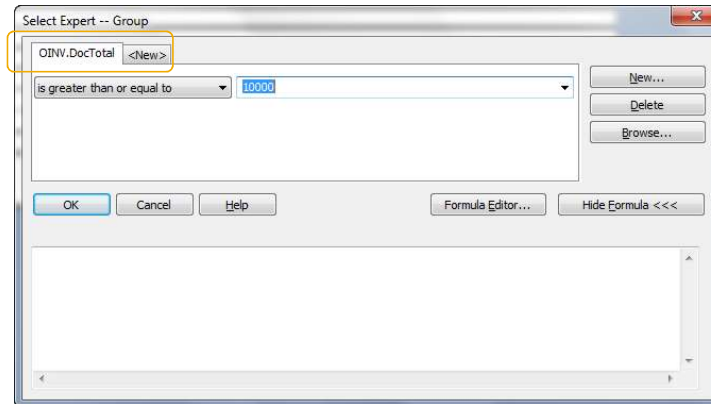
- One of the primary purposes for breaking data into groups is to run calculations on each group of records instead of all records in the report.
- When the program summarizes data, it sorts the data, breaks it into groups, and then summarizes the values in each group automatically.
- You can insert summary information in either the Design or Preview tabs.



- Use the Insert Summary to add subtotals and grand totals

- You can easily define summaries and subtotals in any report.
- Use the Insert Summary to define it.
  - ◆ Select one of the columns located in the report details area to summarize
  - ◆ Select the desired operation – choose one of the options such as sum, max, min, average and more
  - ◆ Select the location of the summary – once of the groups, report level for grand total, or all groups.
  - ◆ You can show the subtotal as a percentage from the grand total of the report instead of an amount.

- It is possible to suppress certain groups from the report based on just the group name, or based on the summary data.
- For example, show only sales employees that sold over 10,000 in a sales report, grouped by sales employee:



- It is possible to suppress certain groups from the report based on just the group name, or based on the summary data.
- For example, show only sales employees that sold over 10,000 in a sales report, grouped by sales employee:
- Note that all groups are still in the report. Only the ones that answer the condition, are printed

## Business Partners By Group

