

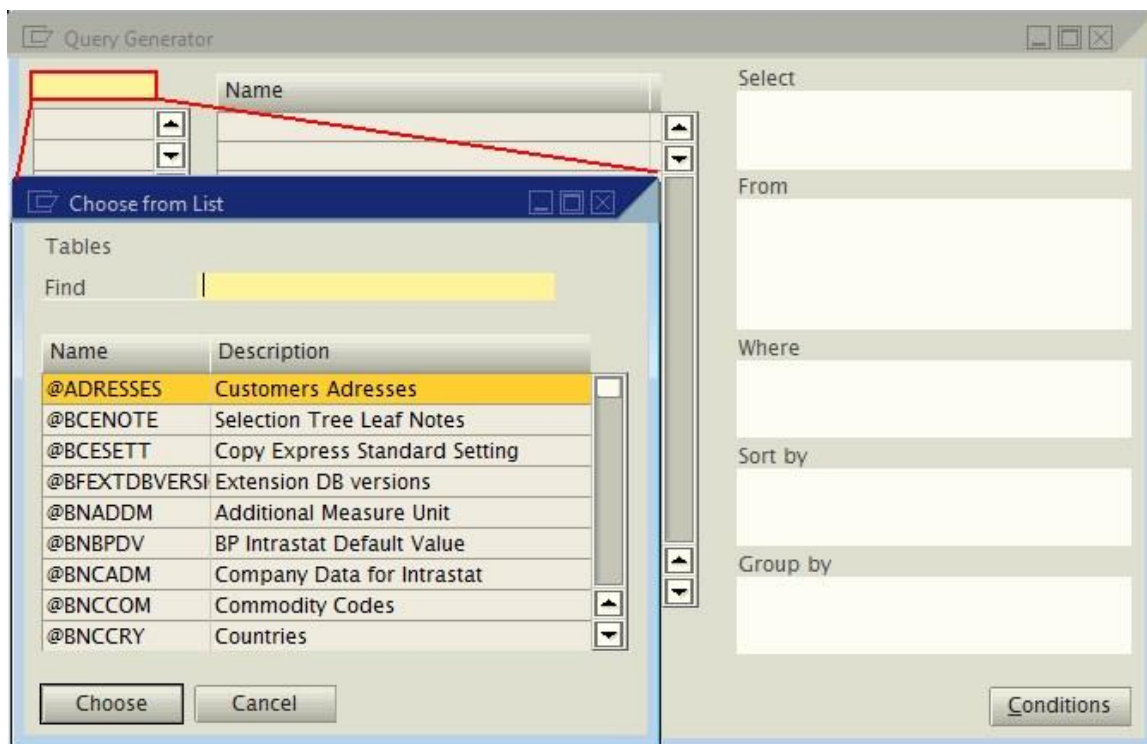
How can we have a list of the SAP Business One tables and fields?

In Hop Islands Company, the local managers require reports which are not readily available in SAP Business One.

In order to create a report with SQL (*Query Generator: Tools -> Queries -> Query Generator*), *XL Reporter (Tools-> XL Reporter)* or *Crystal Report*, it is necessary to know which SAP Business One tables are involved in the functionality or in the business process.

The most common tables and all *User Defined Tables* are found in the *Query Generator*. Go to *Tools -> Queries -> Query Generator*.

Press *Tab* in the first top field to open the *Choose from List* window.

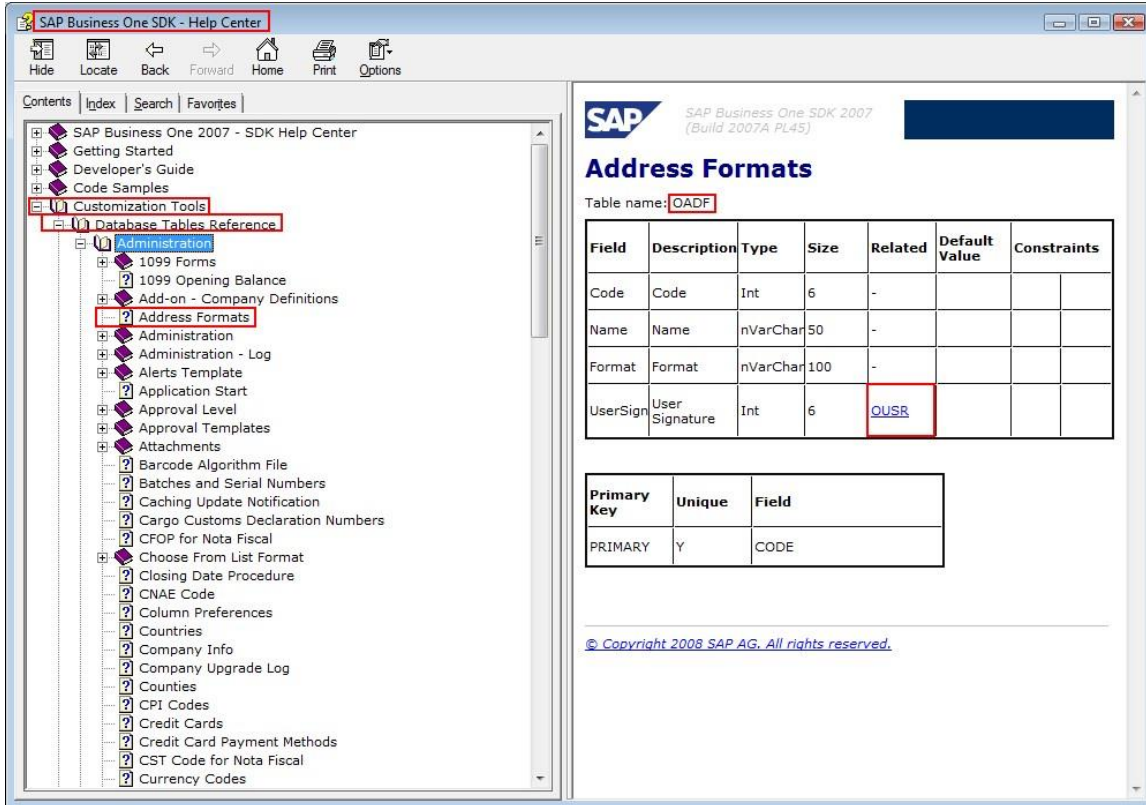


By default, the *Choose from List* window is sorted in an ascending order by the *Name* column. To sort the list alphabetically in a descending order, double-click twice on the *Name* field title. To look for the table by its description in the *Find* field, double-click on the *Description* field title; this sorts the list alphabetically in an ascending order.

This list however, is not that extensive and some of the required tables may not be listed in the *Query Generator - Choose from list*.

In order to obtain more table information, it is possible to use the [SDK Help file](#). In the zip file, attached to the link:

1. Select `SDK_EN.chm`.
2. Under the *Contents* tab, expand *Customizations Tools*.
3. Expand *Database Tables Reference*.
4. Select the relevant module and the relevant functionality.



The screenshot shows the SAP Business One SDK Help Center interface. The left pane displays a tree view of the help center contents, with 'Address Formats' selected under 'Database Tables Reference'. The right pane shows the details for the 'Address Formats' table, including a table of fields and a table of primary keys.

Table name: `OADF`

| Field | Description | Type | Size | Related | Default Value | Constraints |
|----------|----------------|----------|------|----------------------|---------------|-------------|
| Code | Code | Int | 6 | - | | |
| Name | Name | nVarChar | 50 | - | | |
| Format | Format | nVarChar | 100 | - | | |
| UserSign | User Signature | Int | 6 | OUSR | | |

| Primary Key | Unique | Field |
|-------------|--------|-------|
| PRIMARY | Y | CODE |

© Copyright 2008 SAP AG. All rights reserved.

When the table is selected, the name of the table is written below the table description, on the right hand side of the window. The names of the fields, from this table, their descriptions, type, size and constraints are also available.

5. This also provides the related table and the common fields on which the tables can be connected. The primary key(s) for the table are in the last table of the window.